

VL series

Caratteristiche

Materiale Corpo:

Phenoplasto rinforzato di colore Nero, resistente a solventi, oli, grassi ed altri agenti chimici

Parte Metallica e/o

Fissaggio:

Mozzo in AVP zincato con pre-foro

Product specification

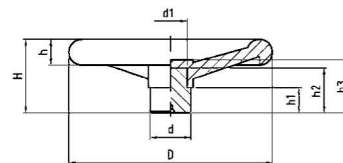
Main Part Material:

Black Phenoplast, solvents, oils, greases and other chemical agents proof

Metallic Part Material &

Finishing:

Zinc Plated Steel Hub with Pre-drilled Hole



Volantino a 4 Razze Handwheel, 4-Spokes

Codice	D	d	d1	H	h	h1	h2	h3	Peso grammi Weight gr	Confezione Pz Packing Pcs.
B1VL100	100	24	21	47	15	17	36	39	189	1
B1VL120	120	25	21	49	16	15	35	38	219	1
B1VL140	140	28	23	54	20	17	38	41	331	1
B1VL160	160	32	27	56	22	21	40	43	450	1
B1VL200	200	40	32	72	25	25	47	51	773	1
B1VL250	250	50	42	82	29	29	56	60	1505	1
B1VL300	300	52	42	95	35	30	63	68	2120	1

VLA series

Caratteristiche

Materiale Corpo:

Phenoplasto rinforzato di colore Nero, resistente a solventi, oli, grassi ed altri agenti chimici

Parte Metallica e/o

Fissaggio:

Mozzo in AVP zincato con pre-foro per eseguz.foro passante

Product specification

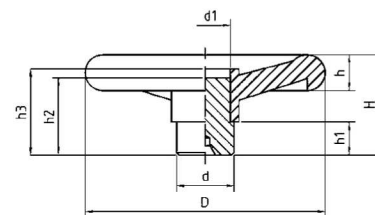
Main Part Material:

Black Phenoplast, solvents, oils, greases and other chemical agents proof

Metallic Part Material &

Finishing:

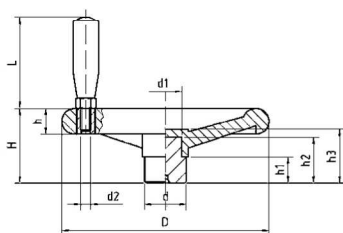
Zinc plated Steel Visible Hub, with preformed Punching



Volantino a 4 Razze e con Mozzo Affiorante Handwheel, 4-Spokes, Visible Hub

Codice	D	d	d1	H	h	h1	h2	h3	Peso grammi Weight gr	Confezione Pz Packing Pcs.
B1VLA100	100	24	21	47	15	17	36	39	207	1
B1VLA120	120	25	21	49	16	15	35	38	231	1
B1VLA140	140	28	23	54	20	17	38	41	345	1
B1VLA160	160	32	27	56	22	21	40	43	473	1
B1VLA200	200	40	32	72	25	25	47	51	815	1
B1VLA250	250	50	42	82	29	29	56	60	1559	1
B1VLA300	300	52	42	95	35	30	63	68	2173	1

Volantino a 4 Razze con Maniglia girevole Handwheel, 4-Spokes Revolving Grip



VLG series

Caratteristiche

Materiale Corpo:

Phenoplasto rinforzato di colore Nero, resistente a solventi, oli, grassi ed altri agenti chimici

Parte Metallica e/o

Fissaggio:

Mozzo in AVP zincato con pre-foro

Product specification

Main Part Material:

Black Phenoplast, solvents, oils, greases and other chemical agents proof

Metallic Part Material &

Finishing:

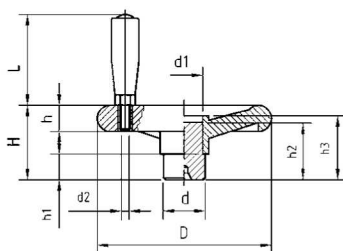
Zinc Plated Steel Hub with Predrilled Hole

Other plastic components:

Revolving Handle, with Brass Bushings

Codice	D	d	d1	d2	H	h	h1	h2	h3	L	Peso grammi Weight gr	Confezione Pz Packing Pcs.
B1VLG100	100	24	21	06MA	47	15	17	36	39	51	222	1
B1VLG120	120	25	21	08MA	49	16	15	35	38	70	274	1
B1VLG140	140	28	23	08MA	54	20	17	38	41	70	391	1
B1VLG160	160	32	27	10MA	56	22	21	40	43	85	558	1
B1VLG200	200	40	32	10MA	72	25	25	47	51	85	903	1
B1VLG250	250	50	42	12MA	82	29	29	56	60	98	1677	1
B1VLG300	300	52	42	12MA	95	35	30	63	68	98	2291	1

Volantino a 4 Razze con Mozzo Affiorante e Maniglia Girevole Handwheel, 4-Spokes Revolving Grip and Visible Hub



VLGA series

Caratteristiche

Materiale Corpo:

Phenoplasto rinforzato di colore Nero, resistente a solventi, oli, grassi ed altri agenti chimici

Parte Metallica e/o

Fissaggio:

Mozzo in AVP zincato con pre-foro per esecuz.foro passante

Product specification

Main Part Material:

Black Phenoplast, solvents, oils, greases and other chemical agents proof

Metallic Part Material &

Finishing:

Zinc plated Steel Visible Hub, with preformed Punching

Other plastic components:

Revolving Handle, with Brass Bushings

Codice	D	d	d1	d2	H	h	h1	h2	h3	L	Peso grammi Weight gr	Confezione Pz Packing Pcs.
B1VLGA100	100	24	21	06MA	47	15	15	36	39	51	240	1
B1VLGA120	120	25	21	08MA	49	16	16	35	38	70	286	1
B1VLGA140	140	28	23	08MA	54	20	20	38	41	70	405	1
B1VLGA160	160	32	27	10MA	56	22	22	40	43	85	581	1
B1VLGA200	200	40	32	10MA	72	25	25	47	51	85	945	1
B1VLGA250	250	50	42	12MA	82	29	29	56	60	98	1731	1
B1VLGA300	300	52	42	12MA	95	35	35	63	68	98	2344	1

VLT series

Caratteristiche

Materiale Corpo:

Phenoplasto rinforzato di colore Nero, resistente a solventi, oli, grassi ed altri agenti chimici

Parte Metallica e/o

Fissaggio:

Mozzo in AVP zincato con pre-foro

Product specification

Main Part Material:

Black Phenoplast, solvents, oils, greases and other chemical agents proof

Metallic Part Material &

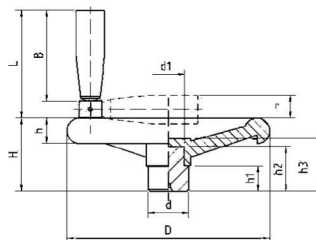
Finishing:

Zinc Plated Steel Hub with Pre-drilled Hole

Other plastic components:

Snap Handle, Collapsible

Volantino a 4 Razze con Maniglia a Scatto Ribaltabile Handwheel, 4-Spokes Snap Handle Collapsible



Codice	B	D	d	d1	H	h	h1	h2	h3	L	r	Peso grammi Weight gr	Confezione Pz Packing Pcs.
B1VLT100	46	100	24	21	47	15	17	36	39	60	17	225	1
B1VLT120	65	120	25	21	49	16	15	35	38	82	17	286	1
B1VLT140	65	140	28	23	54	20	17	38	41	82	17	403	1
B1VLT160	65	160	32	27	56	22	21	40	43	82	17	521	1
B1VLT200	86	200	40	32	72	25	25	47	51	107	21	957	1
B1VLT250	86	250	50	42	82	29	29	56	60	107	21	1669	1
B1VLT300	86	300	52	42	95	35	30	63	68	107	21	2283	1

VLTA series

Caratteristiche

Materiale Corpo:

Phenoplasto rinforzato di colore Nero, resistente a solventi, oli, grassi ed altri agenti chimici

Parte Metallica e/o

Fissaggio:

Mozzo in AVP zincato con pre-foro per esecuz. foro passante

Product specification

Main Part Material:

Black Phenoplast, solvents, oils, greases and other chemical agents proof

Metallic Part Material &

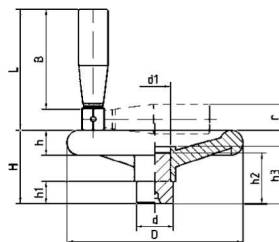
Finishing:

Zinc plated Steel Visible Hub, with preformed Punching

Other plastic components:

Snap Handle, Collapsible

Volantino a 4 Razze con Mozzo Affiorante e Maniglia a Scatto Ribaltabile Handwheel, 4-Spokes Snap Handle Collapsible and Visible Hub



Codice	B	D	d	d1	H	h	h1	h2	h3	L	r	Peso grammi Weight gr	Confezione Pz Packing Pcs.
B1VLTA100	46	100	24	21	47	15	17	36	39	60	17	242	1
B1VLTA120	65	120	25	21	49	16	15	35	38	82	17	298	1
B1VLTA140	65	140	28	23	54	20	17	38	41	82	17	417	1
B1VLTA160	65	160	32	27	56	22	21	40	43	82	17	543	1
B1VLTA200	86	200	40	32	72	25	25	47	51	107	21	1000	1
B1VLTA250	86	250	50	42	82	29	29	56	60	107	21	1680	1
B1VLTA300	86	300	52	42	95	35	30	63	68	107	21	2336	1